

IP Camera Setup in DinoCapture 2.0

Ref No. 04252011

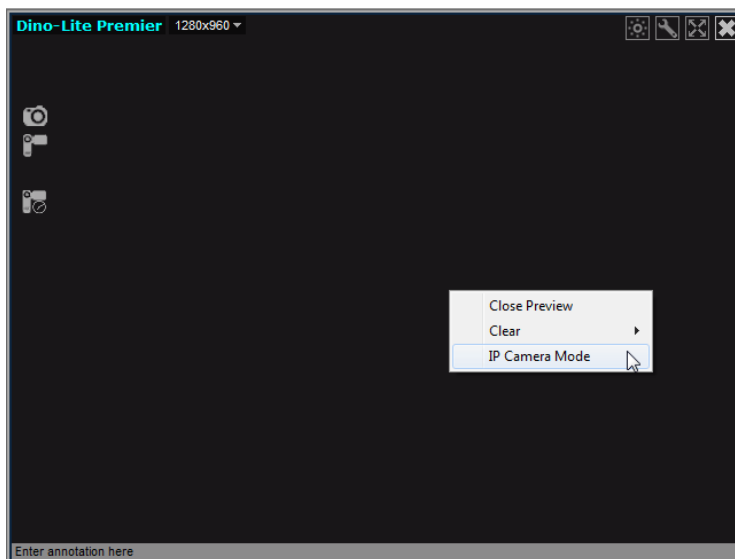
You can allow other people to remotely see your Dino-Lite and be able to see a remote Dino-Lite with the DinoCapture 2.0 software. You can share your live video feed in your local area network* or through the World Wide Web*. It is a feature useful for situations where privacy is needed as the only way to connect to the remote IP camera is to know the others IP address. It can be used for professions such as doctors who require doctor/ patient confidentiality and also education where the teacher can see on what the students are examining.

Switch to IP Camera Mode for others to see your Dino-Lite

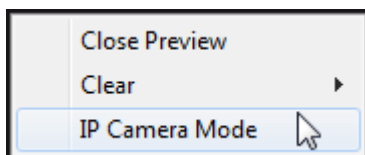
Turning your live preview window into IP camera mode allows remote DinoCapture 2.0 users to be able to view your live video feed.


Switching to IP Camera Mode:

1. Right click live preview window

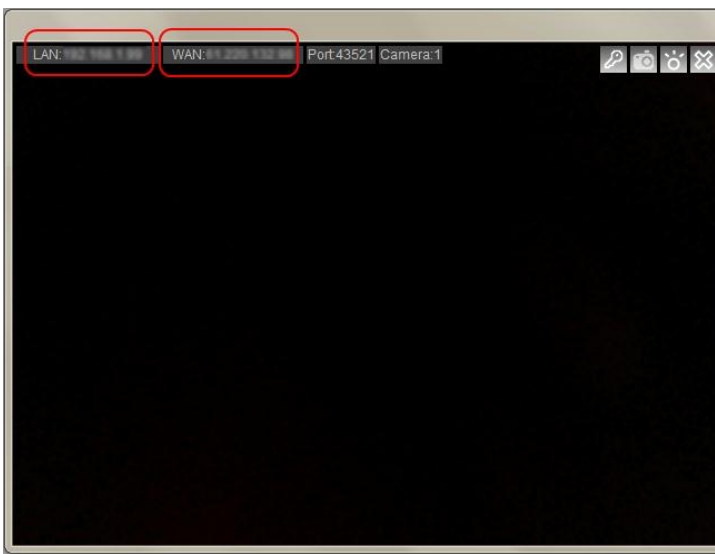


2. Select "IP Camera Mode"



3. Your live preview window will change into IP camera mode and is now ready for remote DinoCapture 2.0 users to view your live video feed. In this mode you can take pictures, add a password  for additional security, and turn on/off the LED's on the Dino-lite. You can also see your LAN and WAN** IP address on the top left corner of the window to easily identify your IP address for others to connect to your IP Dino-Lite or Dino-Eye. If you are behind a firewall, please check the "[If behind a Firewall](#)" section of this instruction sheet.
4. When asking someone to connect to your IP camera through the internet*, have them type the WAN** IP address instead the LAN** address when attempting to connect.

Use the LAN IP address when connecting to other IP camera's in an intranet*.

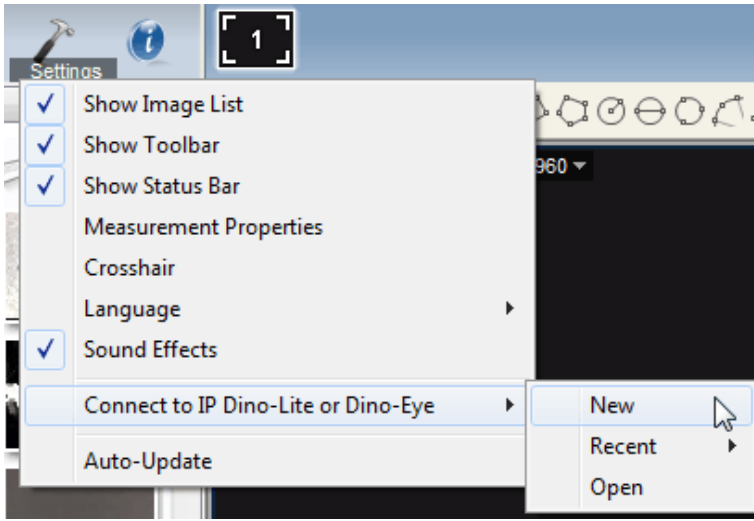


How to connect to a remote Dino-Lite or Dino-Eye

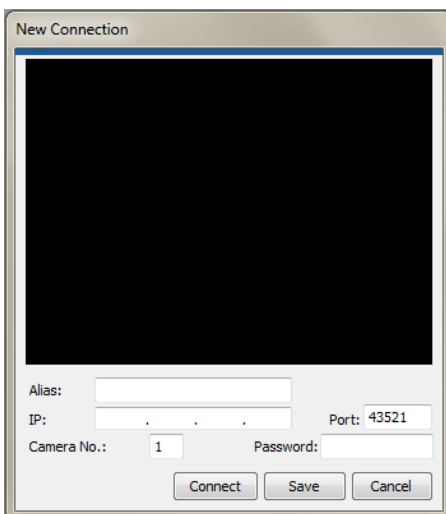
Connecting to an IP Dino-Lite or Dino-Eye allows you to view a remote live video feed of a Dino-Lite or Dino-Eye in IP camera mode with the DinoCapture 2.0 software.

Connect to IP Dino-Lite or Dino-Eye:

1. Ensure the remote Dino-Lite or Dino-Eye you want to connect to have switched into [IP camera mode](#).
2. Select "Settings"
3. Move your mouse over to "Connect to IP Dino-Lite or Dino-Eye"
4. Then click on "New"



5. The New Connection window will pop up where you can fill in information to connect to the remote Dino-Lite.



Alias: Create a name for the remote Dino-Lite (When done, the name will be displayed in “Recent” and title of the window).

IP: Enter the IP of the remote Dino-Lite that is in server mode.

Port: Port refers to TCP Port***. The default is 43521 but you can create your own number (1024-65535). If you do not know which TCP Port are used already, you may want to use the default number.

Camera No.: Select which Dino-Lite is in server mode from the remote IP (If only 1 Dino-Lite is connected then input “1” as camera number).

Password: Enter password if a password was created for the remote Dino-Lite.

Connect: connect to see if it works. If not connected, you will only see a black screen.

Save: Save the settings of the remote Dino-Lite that can be recalled later on in “Recent”.

Cancel: Cancel connection setup.

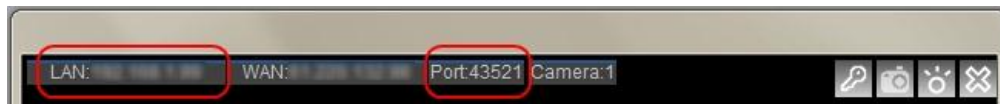
If behind a Firewall

The IP Dino-Lite camera cannot be detected by other DinoCapture 2.0 over the internet* if your router has a firewall. Set your router firewall to do Port Forwarding which is like a man made “hole” in the firewall that only exists if you create it. Port forwarding will allow people to connect to **YOUR** IP Dino-Lite when you are behind a firewall.

Setup Port Forwarding:

1. First figure out your LAN** IP address and TCP Port***.

Turn the live preview window into IP Camera Mode. The LAN and Port can be found on the top left corner of the window.



2. Set an IP address instead of a roaming IP address

Change the Local Area Network Properties to use a set IP address instead of automatically obtaining a random IP address when connecting to the internet.

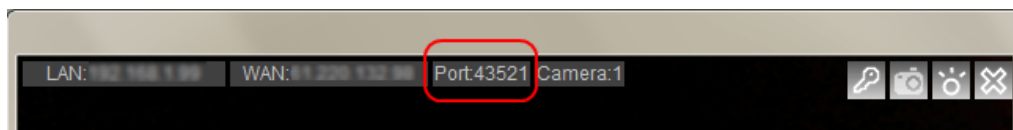
3. Set your router to port forward to the desired computer with the set IP address.

Enter your router settings and have the router “forward” incoming internet traffic to your local computer while still be behind a firewall.

4. People can now connect to your IP camera

Additional Information

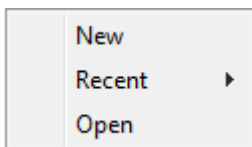
- If one IP Dino-Lite has a password the other will also need to set a password and vice versa.
- If you do not desire to use the default Port, you can change the TCP Port *** after creating a new connection. Simply double click to change it or change it in the Connection list.



- Amount of IP camera's you can connect to depend on your internet setting and system specification. For example 10/100mb internet speed connection can connect to about 5 IP cameras.
- If having trouble controlling the LED's on the Dino-Lite while in IP Camera mode. Try disabling other video devices such as a built-in webcam and try again.
- If you have multiple IP addresses on one computer, the IP displayed in the DinoCapture 2.0 software may not be correct. If so, you may find your IP address by searching it in Windows CMD:

In Windows go to Run >Type: cmd > Type: ipconfig > under the section: "Ethernet adapter Local Area Connection" you can find your IP Address.

- You can open saved or recent IP Dino-Eye or Dino-Eye Connections.



Recent:

Selecting recent allows you to select or view the latest IP Cameras that you have recently connected to.

Open:

Selecting open allows you to modify the information stored regarding the remote Dino-Lite (Eg. password, port, and etc.), connect to the remote Dino-Lite, or delete the remote Dino-Lite from your list.

Notes:

*Intranet. An intranet is like a private network shared only with computers that are within that organization.

Internet: The internet is the World Wide Web of interconnected computer networks with billions of users worldwide.

** LAN- local area network (IP created by router for local computers).

WAN- wide area network (Real IP to connect to the World Wide Web).

***Port =TCP Port= Transmission Control Protocol Port. See Fig.1.

Fig.1

