

# DinoCapture Additional Software Instructions for Measurement models

## Window tools

### Microtouch:



The microtouch is a touch sensitive area on the dome that connects to the USB Cable. It functions as a button that lets you take pictures without using the keyboard or mouse.

### LED:



The LED's on AM 311S and above can be turned on and off from the main screen.

To turn on/off the LED's there is a switch with an "O" located on the top right corner of DinoCapture.


### Minimize Window:



Pressing this icon will minimize the DinoCapture window

## Full Screen Display:



The real time display can be enlarged to full screen by clicking  on the upper right corner of the window.

To return from full screen mode, please click "ESC".

## Close Window:



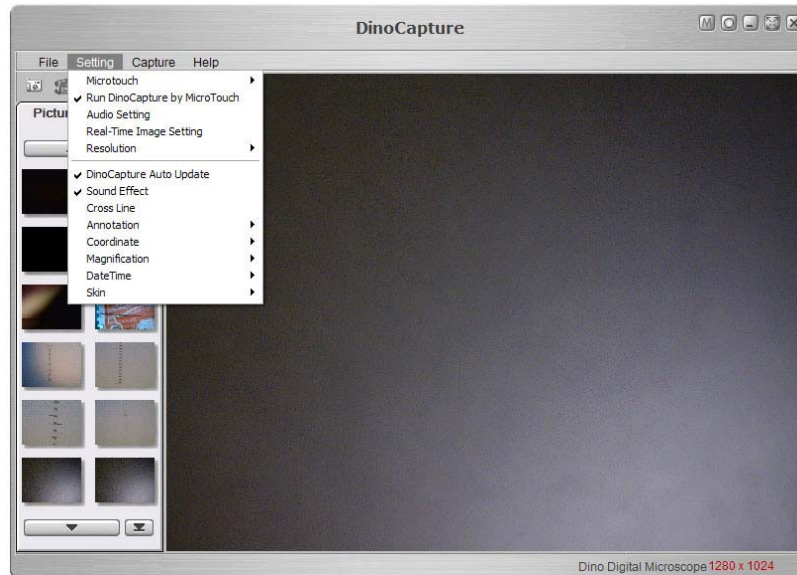
Pressing this icon closes DinoCapture

## Exposure Bar:



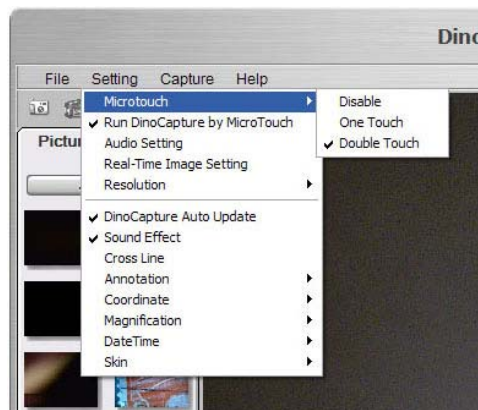
When you place the mouse pointer on the bottom of the DinoCapture program a bar would show up. This bar controls the exposure. The Left number is the default setting and the right number is the last exposure setting that was set

## Settings



### Microtouch

Allow you to set the Microtouch to three different settings: Disable, One Touch, or Double Touch



### Run DinoCapture by MicroTouch

Allows you to start the DinoCapture program by using the Microtouch

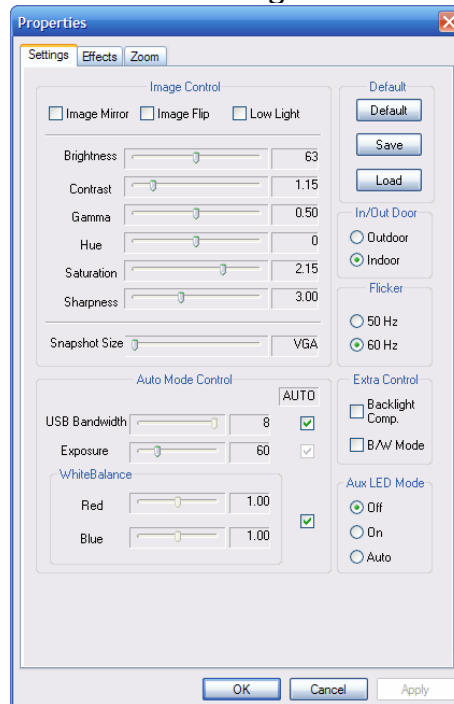
### Audio Setting

Lets you adjust audio for computers equipped microphones

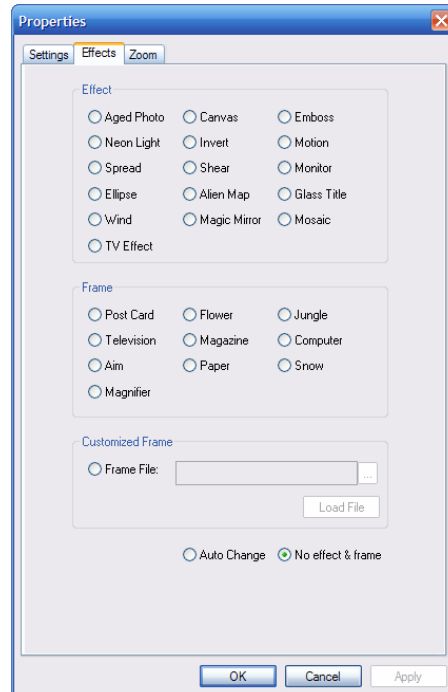
### Real-time Image setting

Allows you to adjust image settings

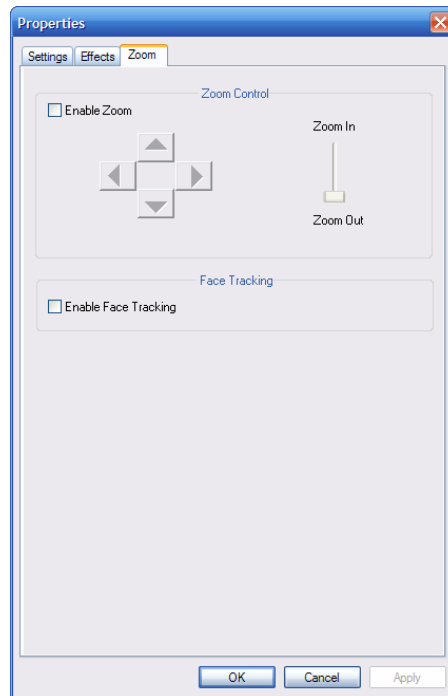
## Settings



## Effects



Note: enable face tracking is not functional



## **Resolution**

Lets you set the resolution of the image

## **DinoCapture Auto Update**

Allows you to turn on/off auto update

## **Sound Effect**

Allows you to turn on/off the sound effects

## **Cross Line**

Allows you to put a cross line on the view window

## **Annotation**

Show- Allows to show and create annotations

Imprint- Allows to show the annotations on saved pictures

## **Coordinate**

Show- Allows to show coordinates in the view window

Set – Allows settings for the coordinate values and position on the view window

## **Magnification**

Set real time magnification – Allows you to set the magnification on the view window

Set magnification after capture – After capturing a picture a window will prompt you to set a magnification value.

Show- Allows showing the magnification value on the view image window

Imprint- Imprints the magnification value on saved pictures.

## **DateTime**

Show- Allows to show the date and time on the view window

Imprint- Allows to imprint the date and time onto saved images

## **Skin**

Allows you to change the DinoCapture appearance

## Function Description



### **Drawing**

Line- allows drawing straight lines. Simply click and drag to desired length then click again to lock in.

Arrow- allows drawing of straight arrows. Simply click and drag to desired start point then click again to the object pointing to.

Freelance- allows free drawing of lines. Simply click and drag to desired shape or length then click again to lock in.

Rectangle – allows drawing of a rectangle. Simply click and drag to desired shape and size then click again to lock in.

Ellipse- allows drawing of a ellipse. Simply click and drag to desired shape and size then click again to lock it

#### *Line Properties*

Color- allows you to change the color of the line

Style- allows you to change the line pattern

Width- allows you to adjust the width of the line

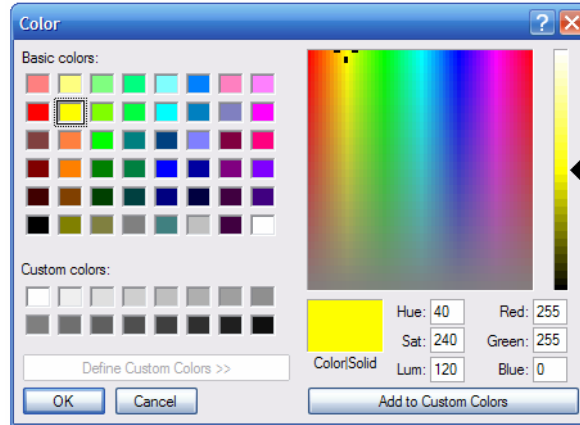
Transparent Color- allows you to choose a transparent line



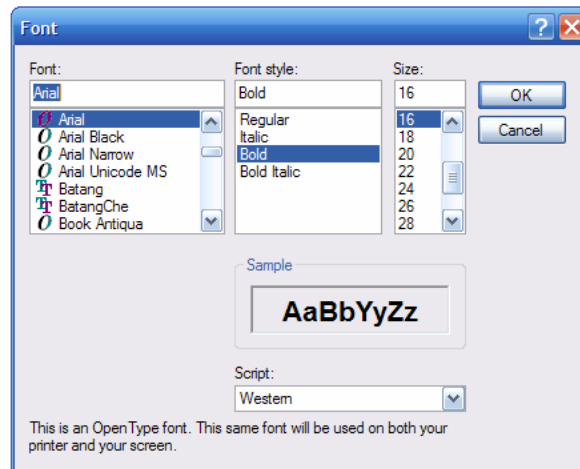
### **Text**

#### *Text Properties*

Color- allows you to change the font color



Font – allows you to change the font of the text



## Measurement

Calibration – Refer to calibration instructions

Line – Measures the distance of a Line

Continuous Line – Measures the distance of multiple lines

Radius Circle – Measures using the radius of a circle

Diameter Circle – Measures using the diameter of a circle

Three Points Circle – Measures using three points of a circle

Three Points Angle – Measures an angle using three points

Four Points Angle – Measures an angle using four points

## ***Line Properties***

Color- allows you to change the color of the line

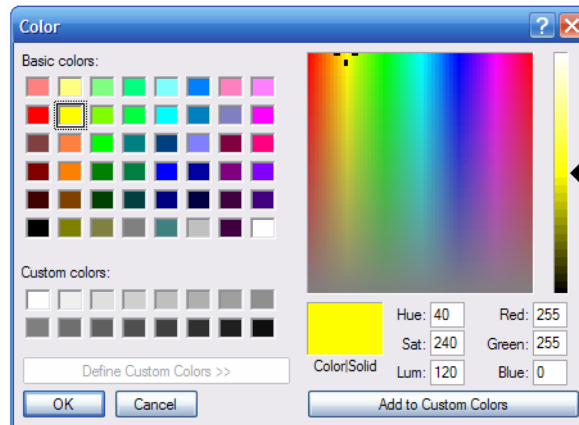
Style- allows you to change the line pattern

Width- allows you to adjust the width of the line

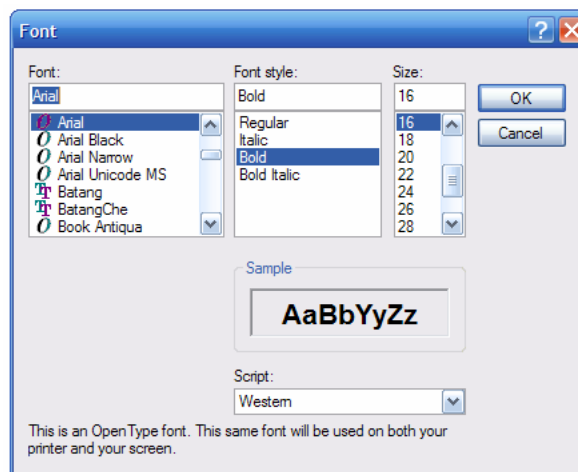
Transparent Color- allows you to choose a transparent line color

## ***Text Properties***

Color- allows you to change the font color



Font – allows you to change the font of the text



Set Units – Change the units to Millimeter, microns, mil, and inches

No Draw – No drawing on the image

Undo – Removes the last measurements

Redo – Replaces a removed measurement