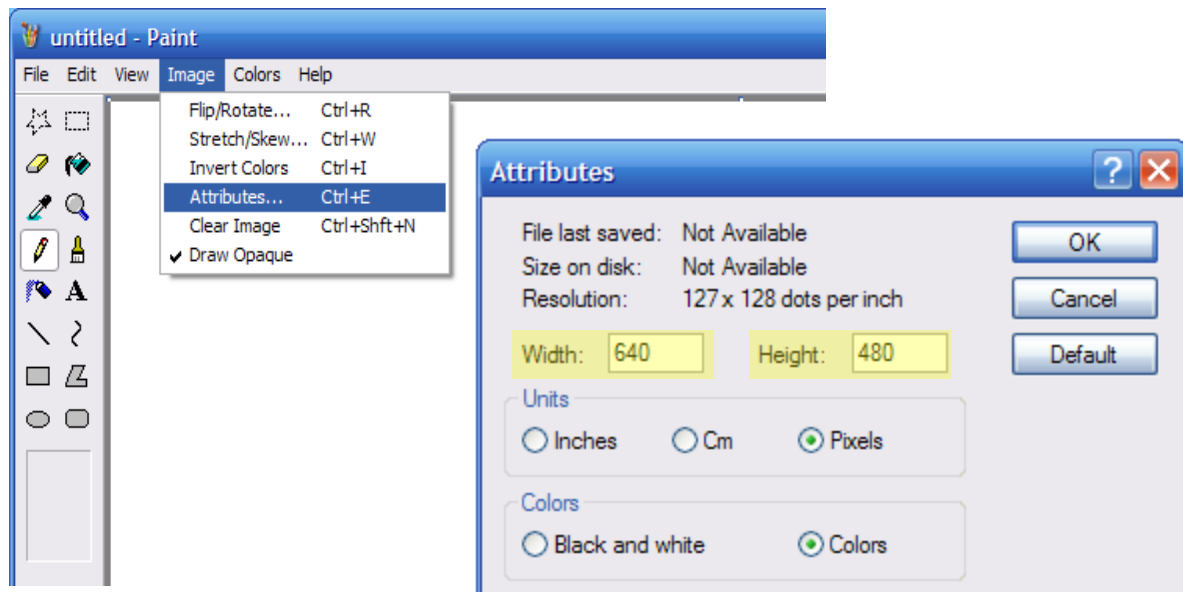


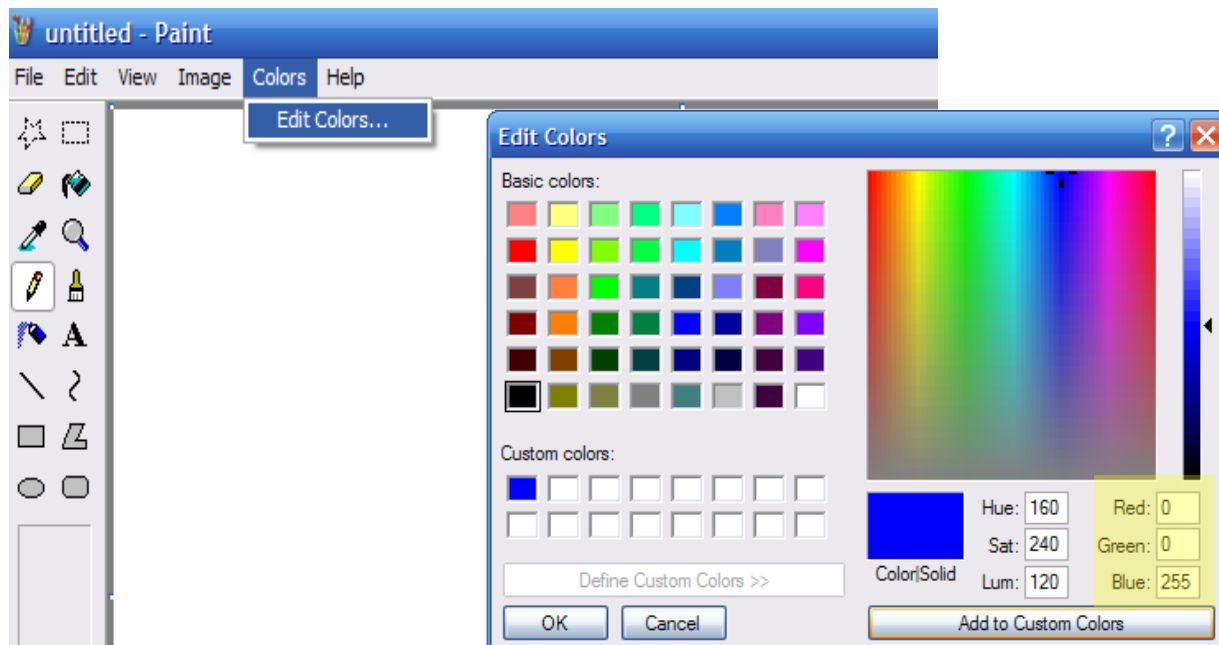
How to Make a Custom Frame in Paint

This tutorial will demonstrate how to make a custom frame using the image editing software Paint. A custom frame can be made in other image editing programs but the dimensions and RGB settings shown in this tutorial must be followed to successfully complete a custom frame.

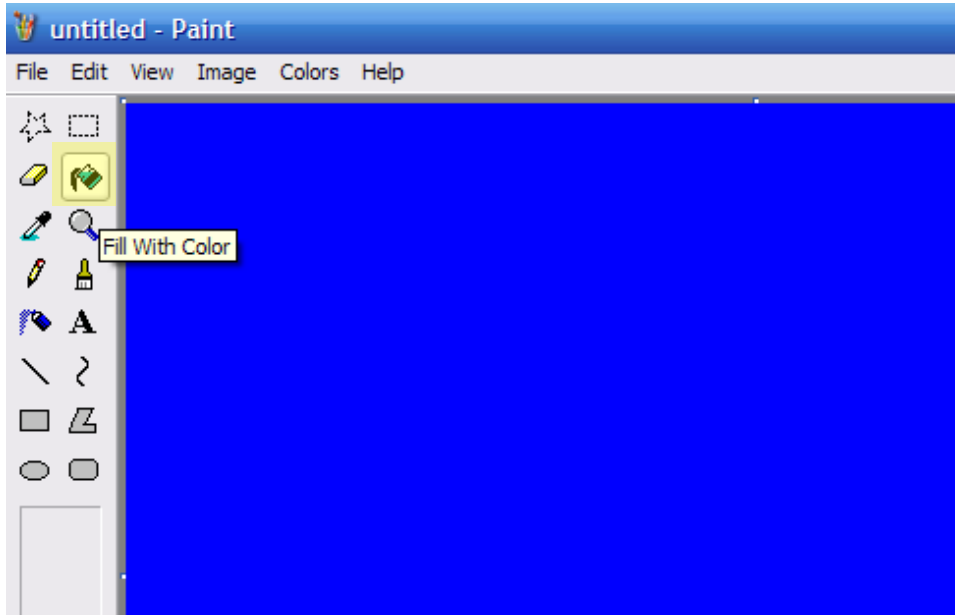
1. Open the Paint program (Start > All Programs > Accessories > Paint). Now click on the Image menu located on the top of the Window and Select “Attributes”. In the Attributes window enter 640 in the width box and 480 in the height box.



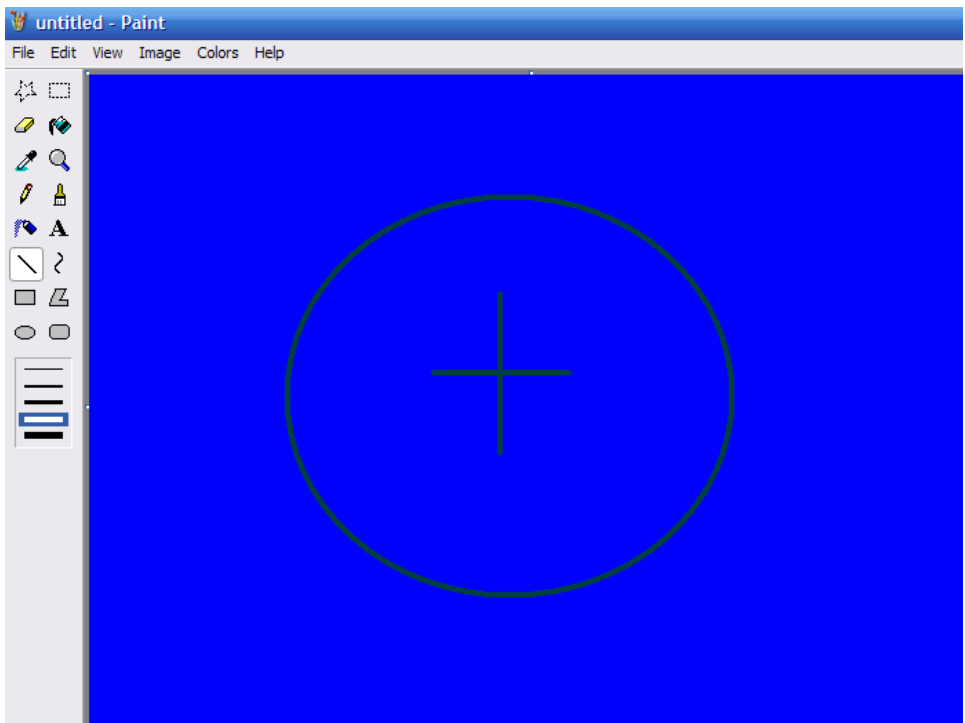
2. Next click on the colors menu located on the top of the window and select “Edit Colors.” In the edit colors window Select “Define Custom Colors” and the RGB settings will be visible. In the RGB settings, set the Red value at 0, Green value at 0, and the Blue value at 255 then select “Add to Custom Colors”



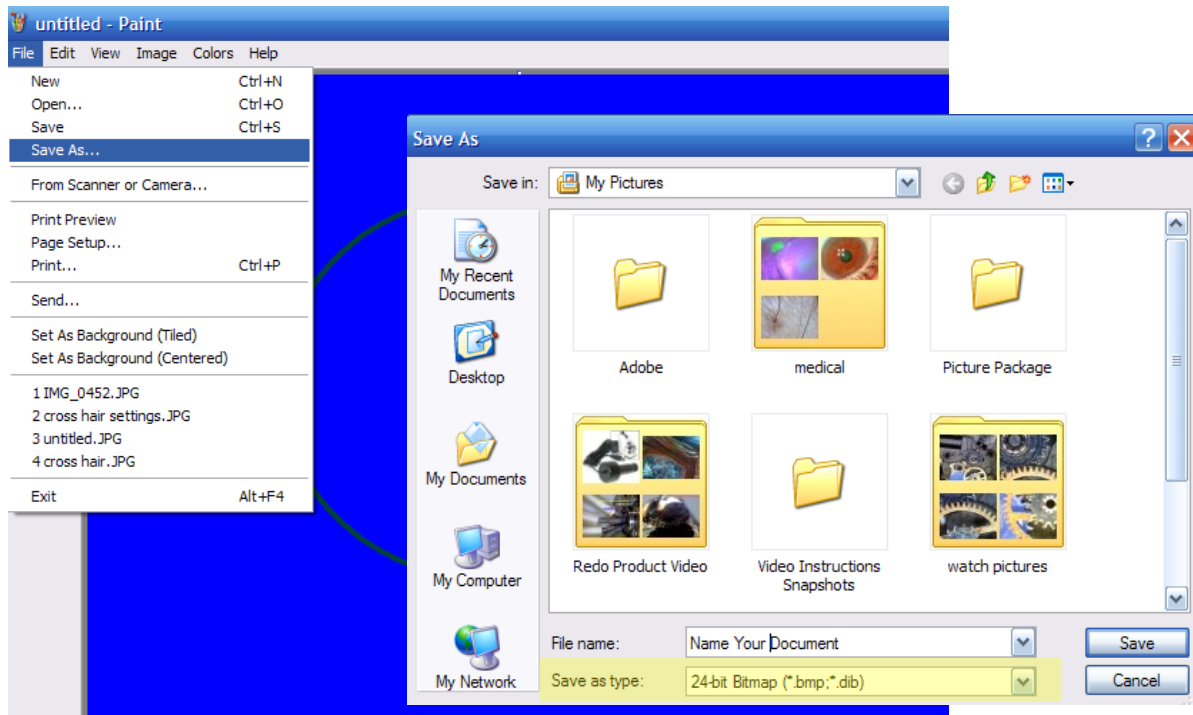
- Now use the Fill icon located left side of the paint program. Fill the canvas with the custom shade of blue that was created. This blue will not be seen when processed as a frame through the DinoCapture program.



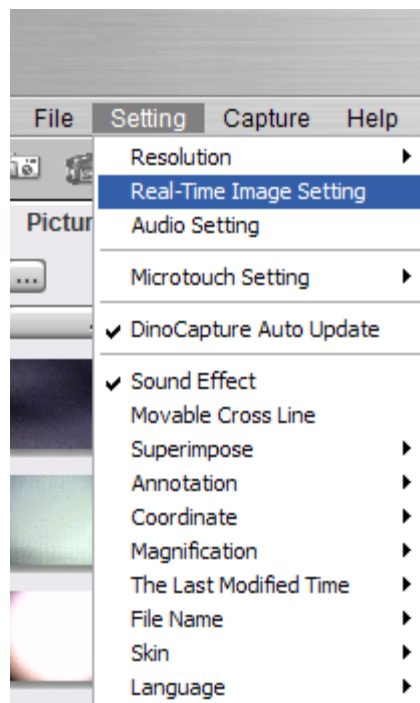
- Select another color from the color pallet and draw a custom frame.



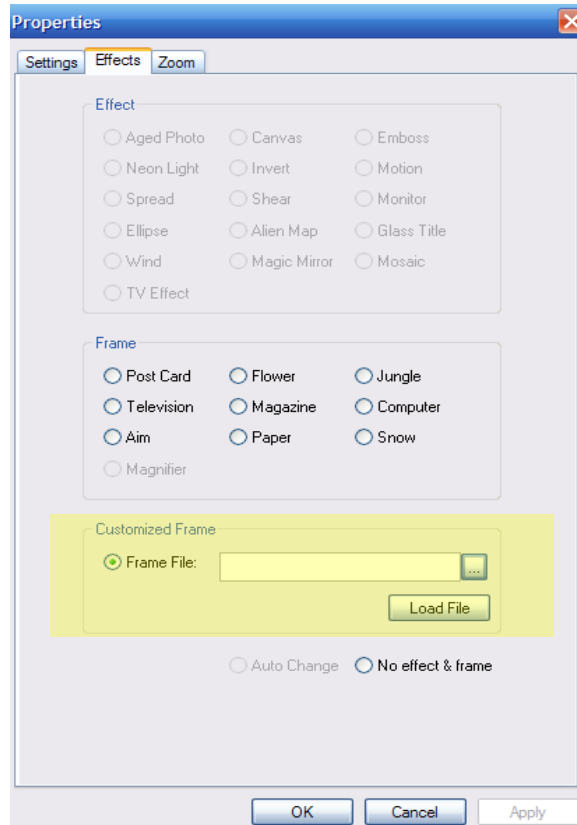
5. After the custom frame is created click on the File menu located on the top of the window then select “Save As”. Name your custom frame and then set Save as type to 24-bit Bitmap then select “Save”.



6. Now open the DinoCapture program and click on the setting menu located on the top of the window then select “Real-Time Image Setting”.



7. In the Properties window select the effects tab on the top of the window. At the bottom of the of the effect tab under customized frame select the Frame file option. To load a custom frame select the path (...) icon and locate the custom frame then select “Load file” then select OK.



8. Now the custom frame will appear superimposed on the DinoCapture live image. To disable the custom frame, from the effects tab select “No effects and frame” then select OK. For more custom frames and video tutorials please visit www.BigC.com

